

**NIC<sup>®</sup>**

For Better Endo



# KM-Blue

Safety · Simplicity · Efficiency

## Easy

- A. Easy to transfer from manual to rotary file system
- B. One Sequence for all canals
- C. Each files are reaching to working length.

## Safe

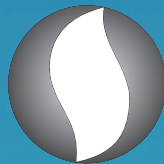
- A. 10/.04, 15/.05 worked as glide path, keep safe for following shaping
- B. Small pitch design of small files confirm more cutting edges and increase instruments stability
- C. Large files with progressive pitch design assure no screw-in effect

## Efficient

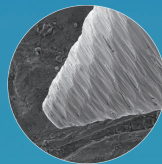
- A. Special cross section design enable to improve cutting efficiency
- B. Full range of size to cover more morphology



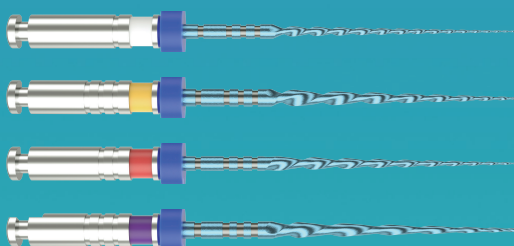
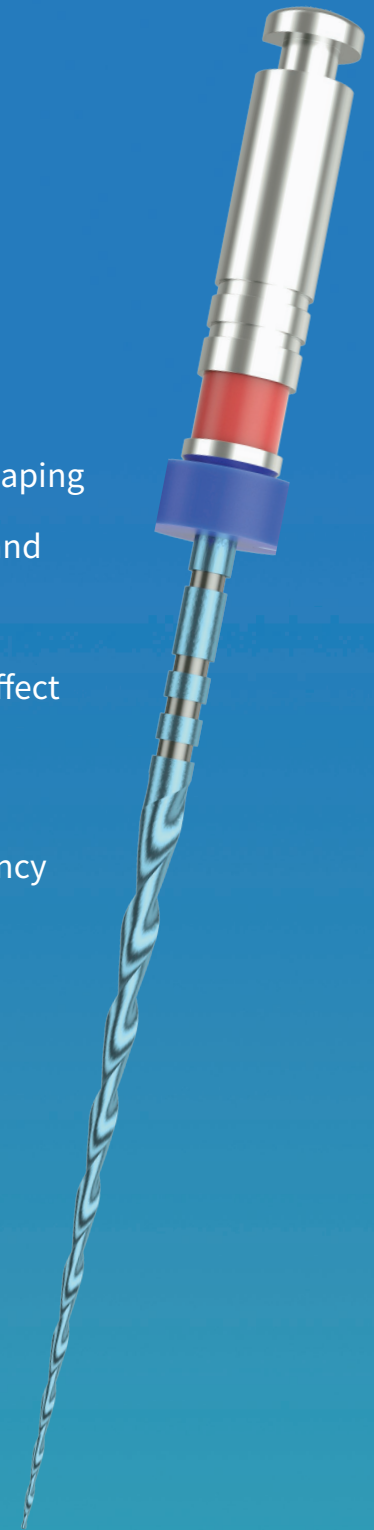
Continuous rotation



S-shhape



Safe guiding tip



Length: 21mm, 25mm, 31mm  
Size: 10/.04, 15/.05, 20/.06, 25/.06, 30/.05,  
35/.04, 40/.04, 45/.04, 50/.04, 60/.04  
25/.07, 30/.06, 35/.06, 40/.06

# FUNCTION

Basic Sequence: 10/.04, 15/.05, 20/.06, 25/.06

Shaping for larger canal: 30/.05, 35/.04, 40/.04, 45/.04, 50/.04, 60/.04

Shaping for Warm Obturation: 25/.07, 30/.06, 35/.06, 40/.06

## OPERATING STEPS

### • Preoperative radiographic evaluation

Observe the configuration of canal, then confirm the quantity, width, length, curvature, and choose a most suitable file system to deliver a treatment.

### • Access

Prepare a straight access to canal orifice.

### • Scouting

Explore the canal up to size #10 hand use file with EDTA.

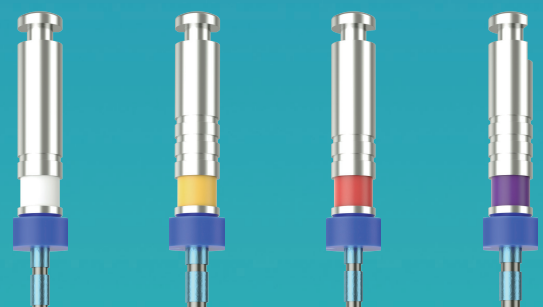
### • Smooth path

The basic sequence: 10/.04 is the first files brought to working length with brushing movement. As soon as the working length is reached, change to the next instruments in the basic sequence: 15/.05, 20/.06, 25/.06. All files are brought to working length.

### • Shaping with Larger Shaping file

If hand use file #30 can reach to 1mm short of working length, the apical area should not need more enlargement.

However, the hand use file#30 could be inserted to working length, s further preparation is necessary. So please go to size:30/.05, 35/.04, 40/.04, 45/.04, 50/.04, 60/.04.



Premium manufacturer  
since 2002

SUPERLINE

SHENZHEN SUPERLINE TECHNOLOGY CO., LTD.

ISO 13485:2016 CE 197 FDA

[www.supline.com](http://www.supline.com)

